



PICK FOAM FLIGHT CASE ABLETON PUSH 3

U93023BL

We, at UDG have further fine-tuned already a great design concept of our flight case into one specially for the most discerning creative performers. Constructed from aluminum thus providing an extremely stable structure with lighter weight compared to traditional flight cases. The inner sides are protected with pick & pluck foam, which allowing user to create individualized adapted compartments. The pick & pluck foam allow you to pluck out any desired shape you require for Ableton Push 3 and creating another slot beside for cable storage. This pick & pluck foam creating an easy, do-it-yourself customized system of case interiors.

The UDG Ultimate Pick Foam Flight Case Ableton Push 3 is designed to keep your Ableton Push 3 protected from accidental damage when you transport it to and from gigs. They're compact and lightweight yet tough enough to keep your gear safe.

FEATURES

- Fits: Ableton Push 3, power adapter, extra cables
- Lighter weight than traditional flight cases
- Black Diamond finishing surface
- Corrosion resistant aluminium profiles with strong rounded corners
- Fully-lined with high density foam protective padding
- Ergonomic & sturdy carry handle
- Pick & pluck foam
- Fully lined interior egg-crate foam on lid
- Two side strong butterfly lock
- Rubber feet at the bottom for support in standing position
- Several additional rivets for improved solidity

DIMENSION		WIDTH	HEIGHT	DEPTH
OUTER	CM	50.0	39.0	16.5
	INCH	19.7	15.4	6.5
INNER	CM	38.0	49.0	15.5
	INCH	14.9	19.3	6.1
WEIGHT		3.67 kg	8.09 lbs	

BLACK
U93023BL



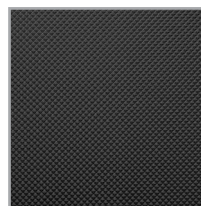
High grade aluminium
UDG logo plate



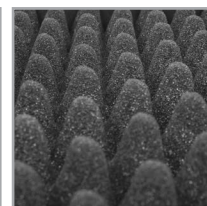
Skillfully designed to fit
the Ableton Push 3



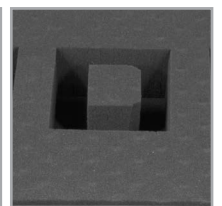
Corrosion resistant
aluminum profiles with
strong rounded corners



Black Diamond finishing
surface



Fully lined interior
egg-crate foam on lid



Pick & pluck foam



Two side strong butterfly
lock



Ergonomic & sturdy carry
handle



Rubber feet at the bottom
for support in standing
position