

**NEW
PRODUCT**



BLACK
U93019BL

PICK FOAM FLIGHT CASE WOLFMIX W1

U93019BL

We, at UDG have further fine-tuned already a great design concept of our flight case into one specially for the most discerning creative performers. Constructed from aluminum thus providing an extremely stable structure with lighter weight compared to traditional flight cases. The inner sides are protected with pick & pluck foam, which allowing user to create individualized adapted compartments. The pick & pluck foam allow you to pluck out any desired shape you require for Wolfmix W1 and creating another slot beside for cable storage. This pick & pluck foam creating an easy, do-it-yourself customized system of case interiors.

The UDG Ultimate Pick Foam Flight Case Wolfmix W1 is designed to keep your Wolfmix W1 protected from accidental damage when you transport it to and from gigs. They're compact and lightweight yet tough enough to keep your gear safe.

FEATURES

- Fits: Wolfmix W1, power adapter, extra cables
- Lighter weight than traditional flight cases
- Black Diamond finishing surface
- Corrosion resistant aluminium profiles with strong rounded corners
- Fully-lined with high density foam protective padding
- Ergonomic & sturdy carry handle
- Pick & pluck foam
- Fully lined interior egg-crate foam on lid
- Two side strong butterfly lock
- Rubber feet at the bottom for support in standing position
- Several additional rivets for improved solidity

DIMENSION		WIDTH	HEIGHT	DEPTH
OUTER	CM	31.1	22.1	14.2
	INCH	12.2	8.7	5.6
INNER	CM	30.1	21.1	13.2
	INCH	11.8	8.3	5.2
WEIGHT		1.76 kg	3.88 lbs	



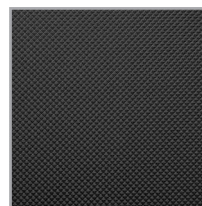
UDG x Wolfmix plate logo



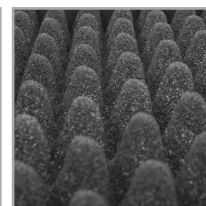
Skillfully designed to fit the Wolfmix W1



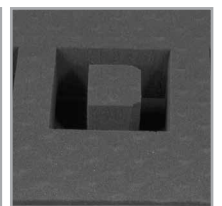
Corrosion resistant aluminium profiles with strong rounded corners



Black Diamond finishing surface



Fully lined interior egg-crate foam on lid



Pick & pluck foam



Two side strong butterfly lock



Ergonomic & sturdy carry handle



Rubber feet at the bottom for support in standing position