



## PICK FOAM FLIGHT CASE MULTI FORMAT TURNTABLE

U93016BL, U93016SL

We, at UDG have further fined-tuned already a great design concept of our flight case into one specially for the most discerning DJ/producer. Constructed from aluminum thus providing an extremely stable structure with lighter weight compared to traditional flight cases. The inner sides are protected with pick & pluck foam that consists of two separate layers, each allowing user to create individualized adapted compartments. The pick & pluck foam allow you to pluck out any desired shape you require for various-sized DJ-controllers and providing the additional option of creating another slot underneath the controller for laptop or cable storage. This pick & pluck foam creating an easy, do-it-yourself customized system of case interiors.

The UDG Ultimate Pick Foam Flight Cases are designed to keep your gear protected from accidental damage when you transport it to and from gigs. They're compact and lightweight yet tough enough to keep your gear safe.

### FEATURES

- Fits: Pioneer DJ PLX-CRSS12/ 1000/ 500, Technics SL-1200MK7, SL-1200GR, Denon VL12 Prime, Reloop RP-8000 MK2
- Lighter weight than traditional flight cases
- Black Diamond finishing surface
- Corrosion resistant aluminum profiles with strong rounded corners
- Fully-lined with high density foam protective padding
- Ergonomic & sturdy carry handle
- Pick & pluck foam with two separate layers
- Replacement pick & pluck foam is available to purchase
- Rear cable access hole with cover
- Protective foam on lid
- Two side strong butterfly lock and solid metal hinges
- Rubber feet at the bottom for support in standing position
- Several additional rivets for improved solidity

DIMENSION		WIDTH	HEIGHT	DEPTH	WEIGHT
OUTER	CM	49.0	42.3	21.0	5.70 kg
	INCH	19.3	16.7	8.3	
INNER	CM	48.0	41.3	20.0	12.57 lbs
	INCH	18.9	16.2	7.9	



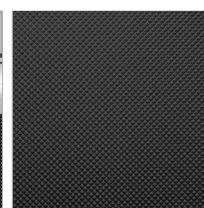
BLACK  
U93016BL



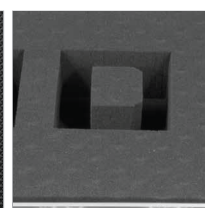
SILVER  
U93016SL



Corrosion resistant  
aluminum profiles with  
strong rounded corners



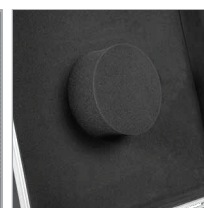
Black Diamond finishing  
surface



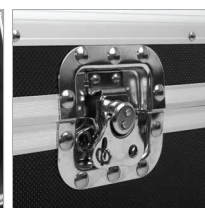
Pick & pluck foam with  
two separate layers



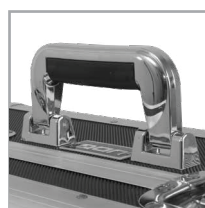
Rear access cable hole  
with cover



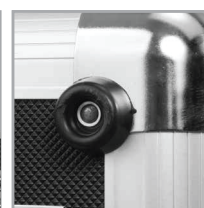
Protective foam on lid



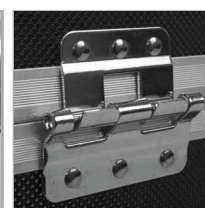
Two side strong butterfly  
lock



Ergonomic & sturdy carry  
handle



Rubber feet at the bottom  
for support in standing  
position



Two solid metal hinges