



PICK FOAM FLIGHT CASE ALPHATHETA CDJ-3000X

U93031BL

**NEW
PRODUCT**

We, at UDG have further fined-tuned already a great design concept of our flight case into one specially for the most discerning creative performers. Constructed from aluminum thus providing an extremely stable structure with lighter weight compared to traditional flight cases. The inner sides are protected with pick & pluck foam, which allowing user to create individualized adapted compartments. The pick & pluck foam allow you to pluck out any desired shape you require for AlphaTheta CDJ-3000X and creating another slot beside for cable storage. This pick & pluck foam creating an easy, do-it-yourself customized system of case interiors.

The UDG Ultimate Pick Foam Flight Case AlphaTheta CDJ-3000X is designed to keep your AlphaTheta CDJ-3000X protected from accidental damage when you transport it to and from gigs. They're compact and lightweight yet tough enough to keep your gear safe.

FEATURES

- Fits: AlphaTheta CDJ-3000X
- Lighter weight than traditional flight cases
- Black Diamond finishing surface
- Corrosion resistant aluminium profiles with strong rounded corners
- Fully-lined with high density foam protective padding
- Fully lined interior egg-crate foam on lid
- Ergonomic & sturdy carry handle
- Two side strong butterfly lock
- Four solid metal hinges
- Pick & pluck foam
- Rubber feet at the bottom for support in standing position
- Several additional rivets for improved solidity

DIMENSION		WIDTH	HEIGHT	DEPTH	WEIGHT
OUTER	CM	56.0	42.3	21.0	4.68 kg
	INCH	22.0	16.6	8.3	
INNER	CM	54.0	40.5	13.8	10.32 lbs
	INCH	21.2	15.9	5.4	

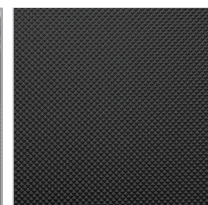
BLACK
U93031BL



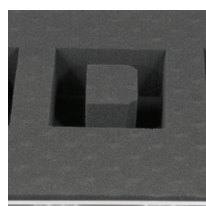
Fits AlphaTheta CDJ-3000X



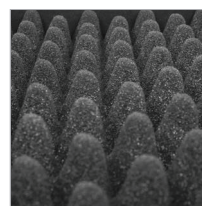
Corrosion resistant aluminium profiles with strong rounded corners



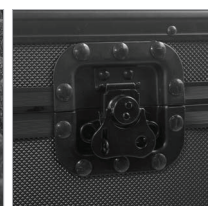
Black Diamond finishing surface



Pick & pluck foam



Fully lined interior egg-crate foam on lid



Two side strong butterfly lock



Ergonomic & sturdy carry handle



Rubber feet at the bottom for support in standing position



Four solid metal hinges