



**NEW
PRODUCT**



PICK FOAM FLIGHT CASE ALPHA THETA DDJ-GRV6

U93027BL

We, at UDG have further fined-tuned already a great design concept of our flight case into one specially for the most discerning creative performers. Constructed from aluminum thus providing an extremely stable structure with lighter weight compared to traditional flight cases. The inner sides are protected with pick & pluck foam, which allowing user to create individualized adapted compartments. The pick & pluck foam allow you to pluck out any desired shape you require for AlphaTheta DDJ-GRV6 and creating another slot beside for cable storage. This pick & pluck foam creating an easy, do-it-yourself customized system of case interiors.

The UDG Ultimate Pick Foam Flight Case AlphaTheta DDJ-GRV6 is designed to keep your AlphaTheta DDJ-GRV6 protected from accidental damage when you transport it to and from gigs. They're compact and lightweight yet tough enough to keep your gear safe.

FEATURES

- Fits: AlphaTheta DDJ-GRV6
- Lighter weight than traditional flight cases
- Black Diamond finishing surface
- Corrosion resistant aluminium profiles with strong rounded corners
- Fully-lined with high density foam protective padding
- Fully lined interior egg-crate foam on lid
- Ergonomic & sturdy carry handle
- Two side strong butterfly lock
- Three rear cable access hole with cover
- Four solid metal hinges
- Pick & pluck foam
- Rubber feet at the bottom for support in standing position
- Several additional rivets for improved solidity

DIMENSION		WIDTH	HEIGHT	DEPTH
OUTER	CM	82.0	54.0	20.0
	INCH	32.3	21.2	7.8
WEIGHT		9.0 kg	19.84 lbs	

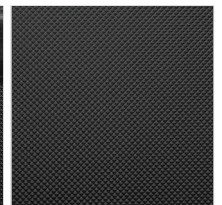
BLACK
U93027BL



High grade aluminium UDG logo plate



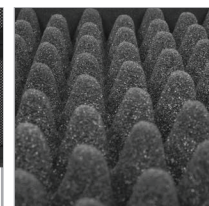
Corrosion resistant aluminium profiles with strong rounded corners



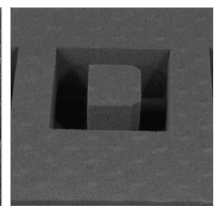
Black Diamond finishing surface



Three rear cable access hole with cover



Fully lined interior egg-crate foam on lid



Pick & pluck foam



Two side strong butterfly lock



Ergonomic & sturdy carry handle



Rubber feet at the bottom for support in standing position