

PICK FOAM FLIGHT CASE MULTI FORMAT 3XL MK2

U93015BL2

We, at UDG have further fined-tuned already a great design concept of our flight case into one specially for the most discerning DJ/producer. Constructed from aluminum thus providing an extremely stable structure with lighter weight compared to traditional flight cases. The inner sides are protected with pick & pluck foam that consists of two separate layers, each allowing user to create individualized adapted compartments. The pick & pluck foam allow you to pluck out any desired shape you require for various-sized DJ-controllers and providing the additional option of creating another slot underneath the controller for laptop or cable storage. This pick & pluck foam creating an easy, do-it-yourself customized system of case interiors.

The UDG Ultimate Pick Foam Flight Cases are designed to keep your gear protected from accidental damage when you transport it to and from gigs. They're compact and lightweight yet tough enough to keep your gear safe.

FEATURES

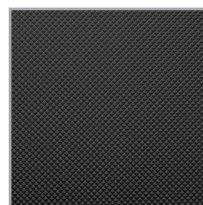
- Three rear cable access hole with cover
- Four solid metal hinges
- Fits: AlphaTheta XDJ-AZ, Pioneer DJ XDJ-XZ, Denon DJ Prime 4, Rane Performer
- Lighter weight than traditional flight cases
- Black Diamond finishing surface
- Corrosion resistant aluminum profiles with strong rounded corners
- Fully-lined with high density foam protective padding
- Ergonomic & sturdy carry handle
- Pick & pluck foam with two separate layers
- Replacement pick & pluck foam is available to purchase
- Fully lined interior egg-crate foam on lid
- Two side strong butterfly lock
- Rubber feet at the bottom for support in standing position
- Several additional rivets for improved solidity

DIMENSION		WIDTH	HEIGHT	DEPTH	WEIGHT
OUTER	CM	95.0	53.6	19.8	9.95 kg
	INCH	37.4	21.1	7.8	
INNER	CM	92.8	51.6	17.6	21.94 lbs
	INCH	36.5	20.3	6.9	

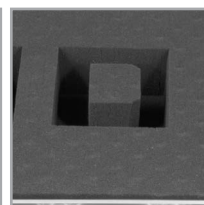
BLACK MK2
U93015BL2



Corrosion resistant aluminum profiles with strong rounded corners



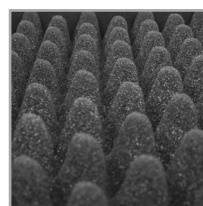
Black Diamond finishing surface



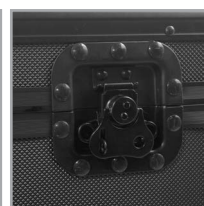
Pick & pluck foam with two separate layers



Three rear cable access hole with cover



Fully lined interior egg-crate foam on lid



Two side strong butterfly lock



Ergonomic & sturdy carry handle



Rubber feet at the bottom for support in standing position



Four solid metal hinges