

**NEW
PRODUCT**



FLIGHT CASE SET PIONEER PLX-CRSS12 & 10"/12" MIXER BLACK PLUS (LAPTOP SHELF & WHEELS)

U91098BL

UDG Ultimate Flightcases not only transport your complete set up easily & securely, but also facilitates devices to be setup within minutes. With these premium features incorporated, the UDG Ultimate Flightcases provides premium professional quality in a very stylish modern black colored combination.



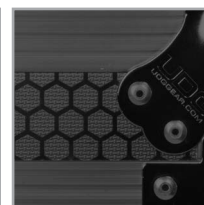
BLACK
U91098BL

FEATURES

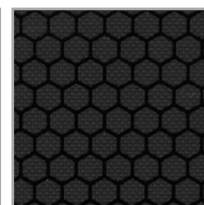
- Fits: 2x Pioneer PLX-CRSS12 and 1x any 10" & 12" mixer: Reeloc Elite, Rane Seventy-Two, Denon DJ X1800 Prime, Pioneer DJM-S9/ 909/ 707, Mixars Quattro/ Duo, NI Kontrol Z2, Thud Ruble TRX + 1 x Laptop + Accessories
- Improved powder coated and anodized hardware
- High density diamond embossed EVA foam & carpeted protective padding
- Dual anchor rivets with included washer
- Convenient 80 mm space at rear for connections & PSU storage
- Cable access hole with removable UDG emblem cover
- Removable access panel
- Roller wheels with high quality in-line skate bearings for convenient transport
- Adjustable laptop shelf
- Heavy duty construction of 9 mm thick plywood
- Laminated in a black finish with a honeycomb/hexagonal "Stage Grip" pattern
- Extra-wide solid aluminum profiles
- High grade aluminium UDG logo plate
- UDG heavy-duty spring-loaded handles
- Secure stacking due to stackable ball corners
- Sturdy construction
- Recessed butterfly twist latch lock



High grade aluminium
UDG logo plate



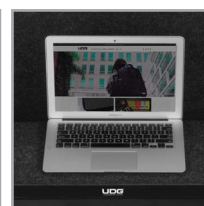
Improved powder coated
and anodized hardware



Laminated in a black finish
with a honeycomb/hexagonal
"Stage Grip" pattern



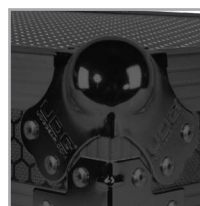
Roller wheels with high
quality in-line skate
bearings



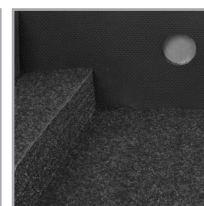
Adjustable laptop shelf



Removable access panel



Secure stacking due to
stackable ball corners



High density diamond
embossed EVA foam &
carpeted protective padding



Cable access hole with
removable UDG emblem
cover

DIMENSION		WIDTH	HEIGHT	DEPTH
OUTER	CM	113.9	56.4	23.2
	INCH	44.8	22.2	9.1
INNER TURNTABLE COMPARTMENT	CM	35.6	45.6	8.1
	INCH	14.0	17.9	3.2
INNER MIXER COMPARTMENT	CM	33.3	52.6	8.7
	INCH	13.1	20.7	3.4
WEIGHT		20.5 kg	45.2 lbs	